

🛏️ 2 🛋️ 2 🛁 2



Heatherlands, *Sunninghill*

OSBORNE HEATH

A two double bedrooms, two reception, two bathroom ground floor apartment with a private garden, garage and parking.

This ground floor apartment has two reception rooms, a separate kitchen, two double bedrooms, and en suite and dressing area to the main bedroom, and a bathroom.

Outside there is a private garden, garage and parking.

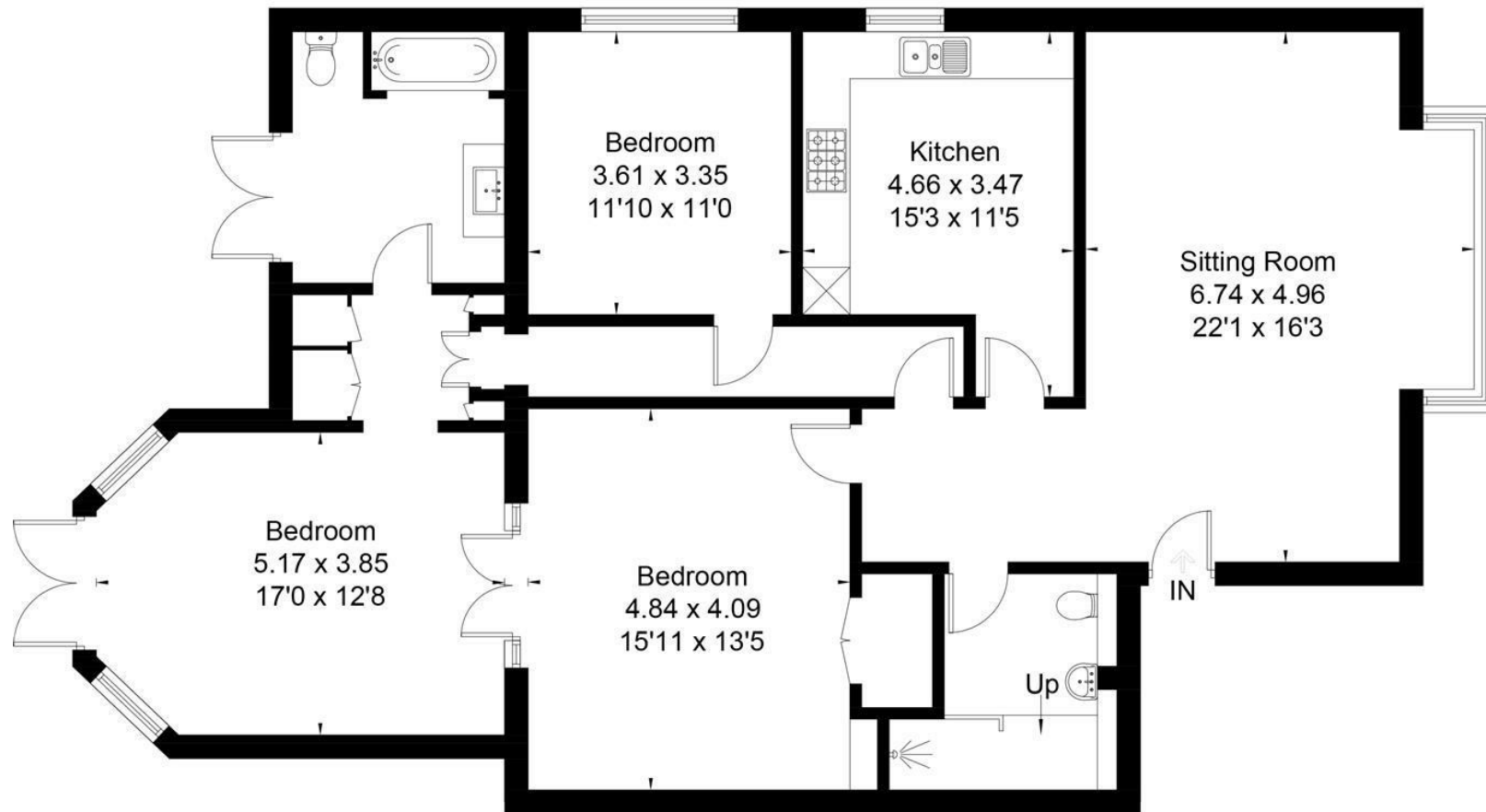
Heatherlands is in-between Heathfield Avenue and Larch Avenue. Local schools include Charters, Holy Trinity, St Francis, St Michael's and The Marist. The village has a number of local high street businesses and great restaurants and pubs. Nearby places of interest include Ascot Racecourse, Coworth Park, Guards Polo Club, Legoland, The Lexicon, Wentworth Club and Windsor Great Park. Sunninghill is also convenient for the M3, M4, M25 and Heathrow Airport.

EPC rating C. Deposit £2,307. Council Tax Band E. Lease 12-36 months.





Approximate Area = 135.8 sq m / 1462 sq ft



Ground Floor

Surveyed and drawn in accordance with the International Property Measurement Standards (IPMS 2: Residential)
fourwalls-group.com 265760